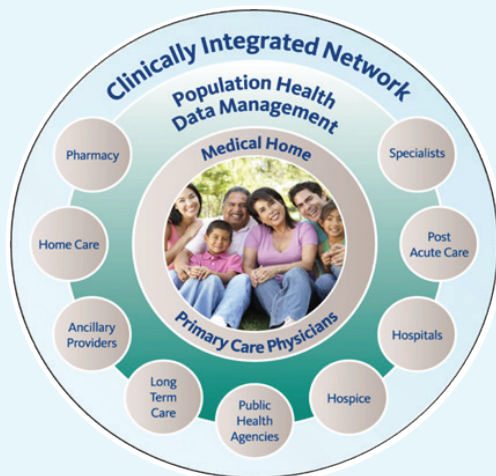


BayCare Physician Partners

What is a clinically integrated network (CIN)?

- A network of physicians working together to meet a standardized set of clinical performance measures that will improve the quality of patient health care in the community
- A network of physicians striving to improve coordination, quality and efficiency of medical care through information sharing
- A vehicle that provides participating members bonus eligibility through negotiated incentive compensation programs from well-known payers in the market
- A structure that will participate in future health reform reimbursements



What are the network benefits?

- BayCare Physician Partners is a physician-led organization:
 - Over 75 physicians involved in network governance
 - Board includes four committees: professional standards and membership, clinical performance, finance/payer contracting and nominating
 - All committees have physician chairs and physician majorities
 - Physician involvement and leadership in developing care management protocols

- Be a part of a large network and still remain independent
 - Independent physicians have a majority vote on the board
 - Maintain independence in managing your practice
- Access to a strong infrastructure with developed informatics systems and teams, extensive quality reporting experience and wide-ranging ambulatory care systems
- Gain greater support through access to and integration of medical information technology:
 - Clinical outcomes reporting system provides increased connectivity, which equals better data
 - Care management and chronic disease management
- A coordinated care management system to assist in providing better care for patients with chronic disease
- Opportunity to demonstrate value and link reimbursement for better performance
 - Data reporting: Provides physicians with business intelligence and helps meet mandatory CMS reporting
- Prepares physicians for current and future reform and regulatory initiatives
- Numerous opportunities to contract with payers in shared savings and other reimbursement arrangements
- No financial contribution required to join the network and ability to cancel participation with a 90-day notice

What are the participation requirements?

- Adherence to clinical protocols, criteria and procedures.
- Participants agree to share patient data as well as have a practice-owned Electronic Medical Record system within two years of joining the network.
- Board certification for medical and surgical practitioners will consist only of boards recognized by ABMS or AOA. Board certification in podiatry may be from ABPS, ABPOPPM or ABMSP.
- BayCare hospital medical staff membership is not required for primary care physicians; however, it is strongly encouraged for specialists.
- Primary care physicians may only join one network with a unique payer due to attribution models.

Why is BayCare supporting the CIN?

- Proactive disease management, patient centered care and population health management aligns with BayCare's strategic direction.
- As a large employer, BayCare is always looking for ways to provide their team members with quality care that is coordinated and efficient. The network's goals align with BayCare's goal for their team members. The network will strive to help BayCare achieve healthier employees while managing and reducing overall costs.

What is BayCare Physician Partners doing about ancillaries/referrals?

- The network operates under the established provider networks unique to each applicable contracted payer. The network does not direct where physicians provide services to patients within the pre-established networks.
- Referrals within BayCare Physician Partners will maximize the ability to share data and coordinate care across the providers in the network.

How will BayCare Physician Partners communicate with me?

- Most network communication will be sent via e-mail. Therefore, it is important that you provide a valid e-mail address for each physician in your practice and for an office contact.
- In addition to e-mail communication, you will be interfacing with many individuals from the BayCare Physician Partners staff who will assist you with technology, care coordination and membership management.
- The network has required meetings where members will have the opportunity to work together on issues such as performance, technology, practice flow, etc.

Sample Clinical Performance Measures*

Measure Title	Category
Childhood immunization	Preventive health
Colorectal cancer screening	Preventive health
Coronary artery disease (CAD): Drug therapy for lowering LDL cholesterol	At-risk population – CAD
Diabetes mellitus: Hemoglobin A1c poor control (greater than 9%)	At-risk population – Diabetes
Generic medications	Efficiency
Improving patient access to care	Efficiency
Mammography screening	Preventive health
Medication reconciliation	Care coordination/transitions
CG-CAHPS survey	Patient experience of care
Readmission rate within 30 days of discharge	Care coordination/transitions
Reducing radiation exposure in diagnostic testing	Efficiency

*There are performance measures specific to primary care physicians and to specialists as well. Clinical Measures are updated annually.

Contact Us:

General Support

Brian Schacker, COO/CFO
Office: (727) 519-1889
brian.schacker@baycare.org

Amy Klaas
Director of Network Development
Office: (727) 519-1294
Cell: (727) 248-9422
amy.klaas@baycare.org

Pinellas and Pasco

Drea Larson, Provider Relations Specialist
Office: (727) 519-1825
Cell: (727) 639-7365
drea.larson@baycare.org

Hillsborough

Leah Tassillo, Provider Relations Specialist
Office: (727) 519-1888
Cell: (813) 408-0781
leah.tassillo@baycare.org

